

**SUWANNEE COUNTY/COLUMBIA COUNTY
BOARD OF COUNTY COMMISSIONERS**

JOINT WORKSHOP

COLUMBIA COUNTY SCHOOL BOARD ADMINISTRATIVE COMPLEX

**372 West Duval Street
Lake City, Florida 32055**

October 23, 2024

11:00 A.M.

This workshop may be VIEWED by visiting the Columbia County Board of County Commissioners meeting page or by using the following link:

<https://www.youtube.com/@columbiacountyflorida9000/streams>

PERSONS WITH DISABILITIES WHO REQUIRE ASSISTANCE TO PARTICIPATE IN THIS WORKSHOP ARE REQUESTED TO CALL DALE WILLIAMS, NFWUA REPRESENTATIVE AT 386-623-3493 OR BY EMAIL AT dwilliams@nfps.net AT LEAST TWO (2) BUSINESS DAYS PRIOR TO THE MEETING.

AGENDA

- (1) Review of Suwannee County utility projects.
- (2) Review of Columbia County utility projects.
- (3) Commissioners Open Discussion
- (4) Public Comments
- (5) Adjournment



SULWANNEE

• COUNTY •

EST. 1858

Utility
Infrastructure
Projects

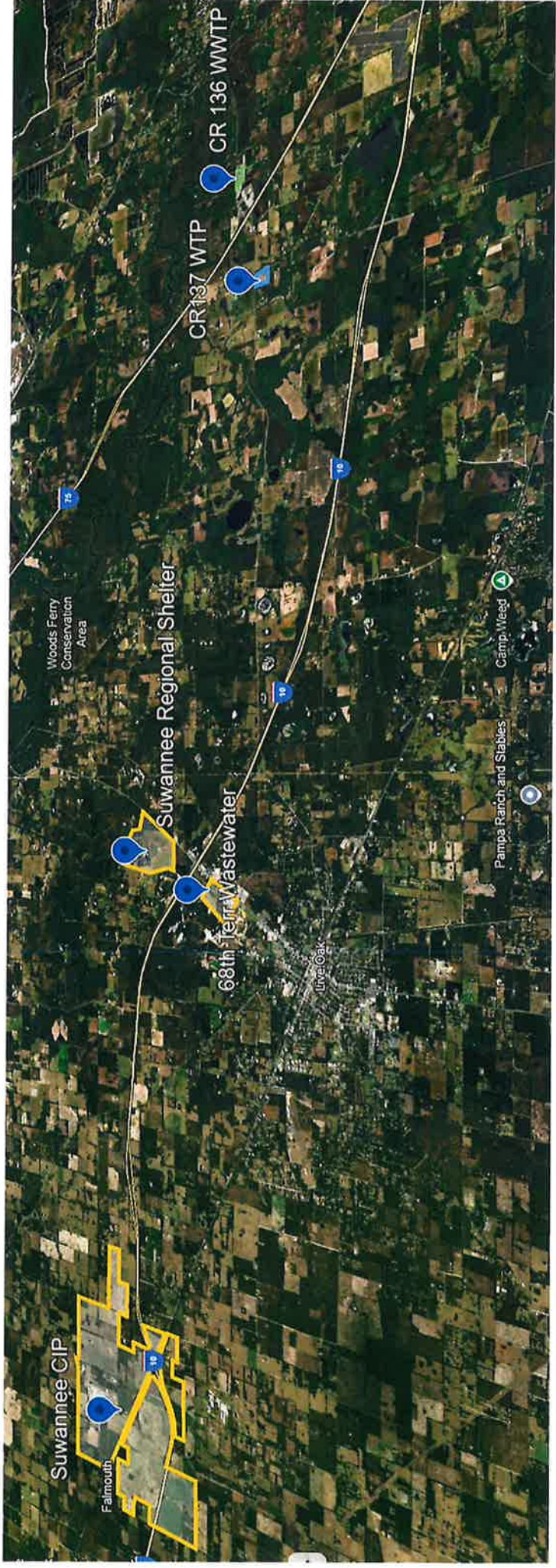
10/11/2024



Suwannee County Utility Project Areas



Suwannee County Utility Project Areas Today





Suwannee County Catalyst Industrial Park



Catalyst Industrial Park Water Services (Today)

Current Services/Capabilities

- Well points/pumps
- Potable H2O & Fire Service
- Ground Storage Tank
- 12" fire service line
- 6" Potable water line

Service Operations

- Outsourced to JEL-H2O
- No trucks or other operations equipment
- Recently completed CIP Master Plan for water, sewer, road, rail and natural gas

Budget/Customers

- FY 23-24 Rev: \$5,773
- FY 23-24 Exp: \$91,500
- 1 Commercial customer
- 1 new customer pending
- \$4.2M grant funding (const)

Catalyst Industrial Park Water Services (Future)

CIP Water Main Extension

- Construction start imminent
- Approx 17,000 ft of 12" piping
- Potable water and fire service mains

1M-Gal Water Storage Tower

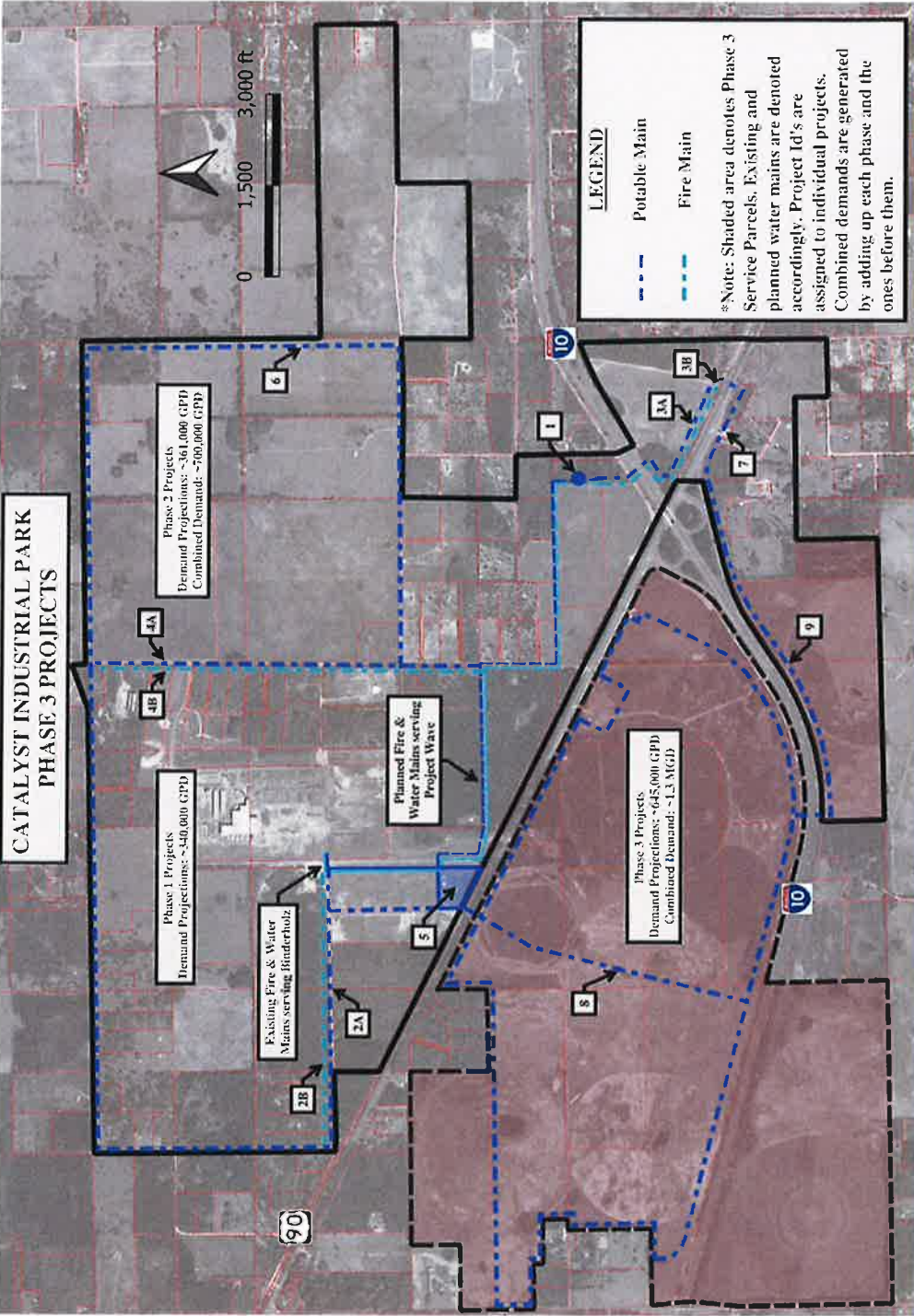
- Secured approx. 50% of funding needed
- Working to obtain property for tower
- Preparing RFQ for engineering and design

CIP Water Main Extension 2A & 2B

- Reviewing proposal for engineering and design

Future CIP Water Improvement Projects (\$ in millions)					
Projection	Project	ID #	Phase	Estimated Cost (\$M)	
2024-2030	1M-gal Water Storage Tower	1	1	\$6.0	
	50th St. Potable Main Extension	2A	1	\$0.6	
	51st St. Fire Main Extension	2B	1	\$0.5	
	Potable Main Extension crossing I-10	3A	1	\$0.2	
	Fire Main Extension crossing I-10 (1)	3B	1	\$0.2	
	Potable Main Loop 1	4A	1	\$2.1	
	169th Rd Fire Main Extension	4B	1	\$0.2	
			Subtotal	\$9.8	
2031-2035	WTP Improvement	5	2	\$8.0	
	Potable Main Loop 2	6	2	\$1.8	
	Potable Main Extension crossing US-90	7	2	\$0.4	
			Subtotal	\$10.2	
2036-2045	Potable Main Loop 2	8	3	\$4.40	
	Potable Main Extension crossing I-10 (2)	9	3	\$0.60	
			Subtotal	\$5.00	
			Grand Total	\$25.0	





Catalyst Industrial Park Wastewater Services

TBD Services/Capabilities

- Design engagement pending
- 200K GPD plant
- 4 lift stations
- Approximately 25,000 LF of sanitary main piping
- RIB/Spray Field

Budget/Customers

- 2 existing customers
- 1-4 new customers pending
- \$11.2M grant funding (const)

Service Operations

- TBD –estimated 24 months out



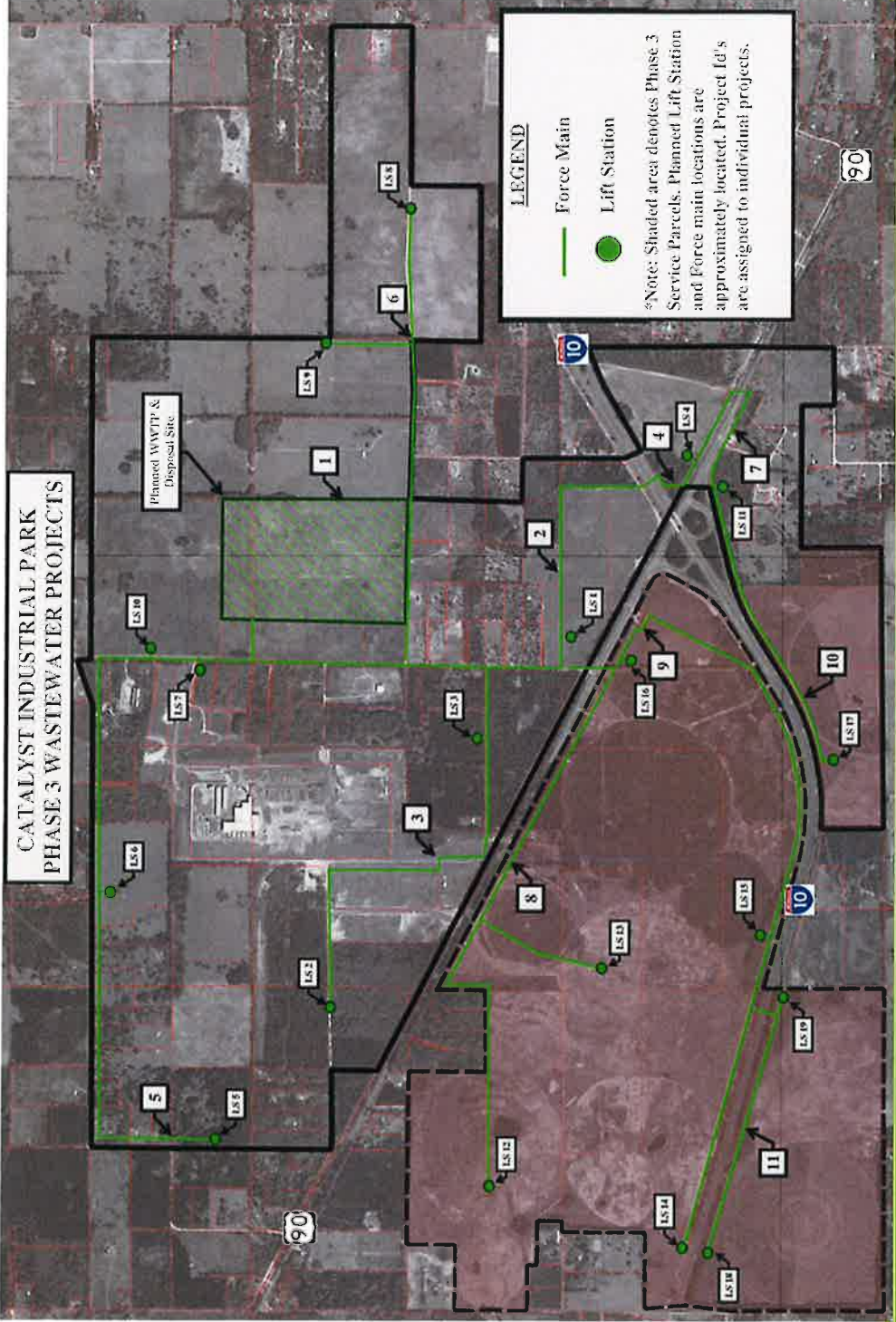
Catalyst Industrial Park Water Services (Future)

CIP Wastewater Improvements Launch in Q4 2024

- Eng./Design engagement for
- 200K GPD plant
- 4 lift stations
- Approximately 25,000 LF of sanitary main piping
- RIB/Spray Field
- Estimate construction start in 15 months

Future CIP Wastewater Improvement Projects (\$ in millions)				
Projection	Project	ID #	Phase	Estimated Cost (\$M)
2024-2030	500,000-Gal WWTP & Spray Field	1	1	\$25.0
	Force Main and Lift Station Construction	2	1	\$1.7
	Force Main and Lift Station Construction	3	1	\$1.7
	Force Main and Lift Station Construction	4	1	\$0.5
	Force Main and Lift Station Construction	5	1	\$2.7
Subtotal				\$31.6
2031-2035	Force Main and Lift Station Construction	6	2	\$2.3
	Force Main and Lift Station Construction	7	2	\$0.8
Subtotal				\$3.1
2036-2045	Force Main and Lift Station Construction	8	3	\$2.7
	Force Main and Lift Station Construction	9	3	\$3.0
	Force Main and Lift Station Construction	10	3	\$1.1
	Force Main and Lift Station Construction	11	3	\$1.4
Subtotal				\$8.2
Grand Total				\$42.9

CATALYST INDUSTRIAL PARK PHASE 3 WASTEWATER PROJECTS



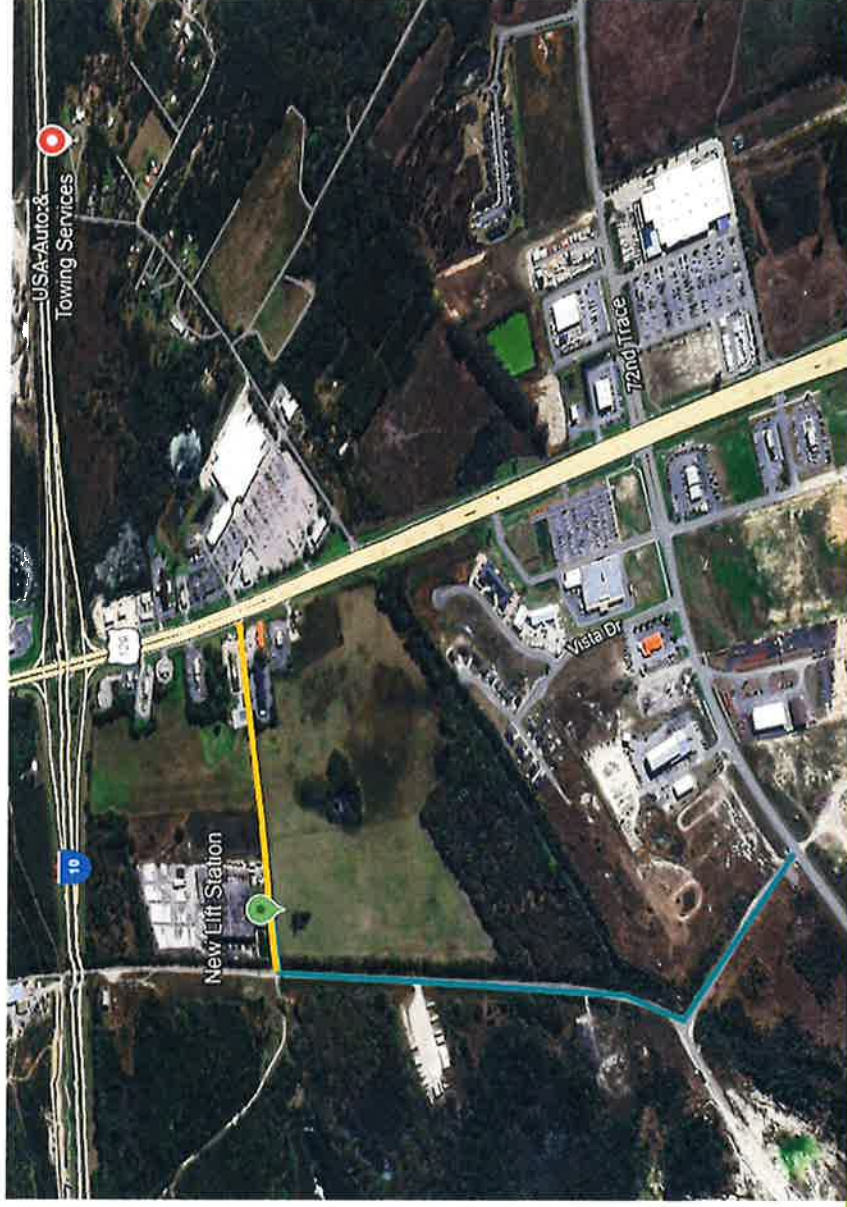


68th Terrace Sewer Main & LS



68th Terrace Sewer Main & Lift Station

- County & City of Live Oak
- Extension of 12" sewer force main
 - Addition of new lift station
 - Reconstruction 68th Terr
 - New intersection geometry and signals





Suwannee County Regional Shelter



Suwannee County Regional Shelter

Early-Stage Project

- 390-acre property acquired
- Extensive utility infrastructure investment: road, water, sewer and power
- Collaboration with FDOT, FDEM, SVEC/FPL and City of Live Oak
- 24-36 month timeline before opening





CR-137 Water Treatment Plant



CR 137 Water Treatment Plant

Current Services/Capabilities

- Capacity: 0.504 MGD
- 2 well points/350 gpm pumps
- 2 ea chlorine feeds
- 65gal hypochlorite tank
- High svc pumps
 - (2) 40hp-750 gpm
 - (1) 20hp 350 gpm
- 126K-gal ground storage tank
- (2) 5,000-gal hydro tanks
- 4,700ft of 8-in water main
- 24,121ft of 12-in water main

Service Operations

- Outsourced to ESI
- No trucks or other operations equipment

Budget/Customers

- FY 23-24 Rev: \$20,000
- FY 23-24 Exp: \$111,000
- 10 Commercial customer
- 1 new customer pending

Future Services/Capabilities

- Completed service extension south to I-10 Exit #292
- Possible extension of lines to FDOT rest area on I-10
- Trulieve construction underway
- Seeking funding to extend services on east side of I-75 exit #439



CR-136 Wastewater Treatment Plant



CR 136 Wastewater Treatment Plant

Current Services/Capabilities

- Capacity: 0.50 MGD
- (2) 0.025 MGD treatment trains
- (3) rapid infiltration basins (22,188 sqft)
- 4,100ft of 4-in sanitary force main
- 8,581ft of 8-in gravity main
- (3) lift stations

Service Operations

- Outsourced to JEL-H2O
- No trucks or other operations equipment

Budget/Customers

- FY 23-24 Rev: \$41,100
- FY 23-24 Exp: \$71,700
- 10 Commercial customers
- 1 new customer pending

Future Services/Capabilities

- Completed service extension south to I-10 Exit #292
- Possible extension of lines to FDOT rest area on I-10
- Trulieve service demand may drive RIB expansion
- Seeking funding to extend services on east side of I-75 exit #439